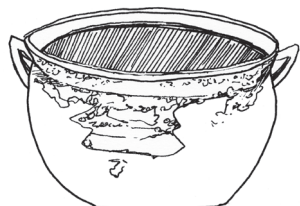


OUTSIDE SCAVENGER HUNT

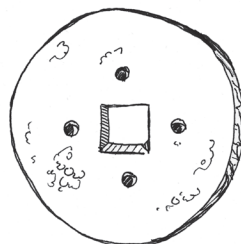
Go outside and circle what you see. Be sure and walk all around!



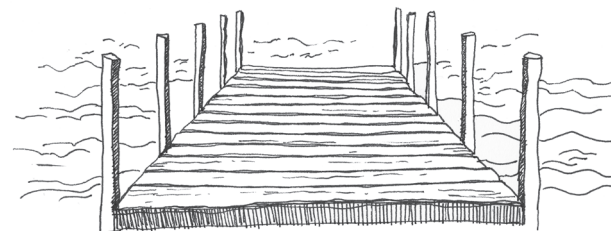
TRY POT



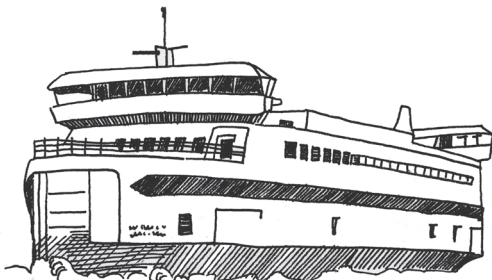
TRIANGLE ROCK



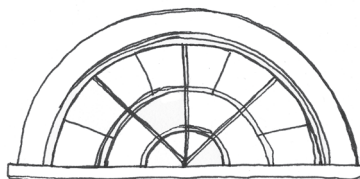
MILL STONE



DOCK



FERRY



HALF MOON WINDOW



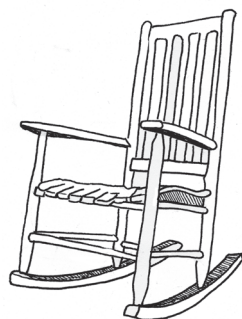
AMERICAN FLAG



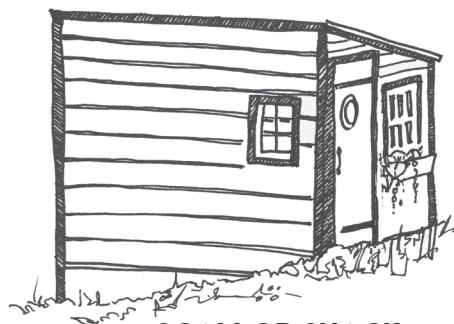
CHIMNEY



WATER PUMP



ROCKING CHAIR



SCALLOP SHACK



FISHING BOAT

OUTSIDE SCAVENGER HUNT

Here's what you've found!

TRY POT

These large pots were used on deck of whaling ships. They would burn day and night to render the oil from the blubber of the hunted whales.

FERRY

The first organized ferry service to the island was started by Abraham Chase of Vineyard Haven in the early 1700s. It was just a guy with a small sailboat, but he had a set route, a schedule of sorts, and standardized prices.

WATER PUMP

Before houses had indoor plumbing, people often had pumps in their yard. There were also public pumps that anyone in town could use. The Vineyard Haven town pump was once located on Main Street near where Brickman's is now.

TRIANGLE ROCK

Local stonemason, Lew French, fits natural pieces of stone together without any visible grout lines. He often supplements the stones with driftwood, antique well covers, and millstones.

HALF MOON WINDOW

Many of the windows in this building are the original 1895 windows, restored. If windows were unsalvageable, they were replaced with period appropriate glass. This interesting little window is one of the originals.

ROCKING CHAIR

Take a seat, count boats, listen for the Steamship whistle, and look at that view!

MILL STONE

Farmers who grew corn and wheat brought it to "grist mills" where it was ground between pairs of heavy millstones like these to make flour. Mill stones were often turned by water wheels and windmills.

AMERICAN FLAG

The flag that flew over the Marine Hospital when it opened in December 1895 had only 44 stars, because these states were not part of the union yet: Utah, Oklahoma, New Mexico, Arizona, Alaska, and Hawaii.

SCALLOP SHACK

The shack's original use was as a working studio to build model ships, a man that lived at the marine hospital used it for years. It eventually went on to become the hardier shellfish shack that it is today.

DOCK

If the harbor freezes over in the winter, the ice closes tightly around the pilings of docks like this one. As waves and tides lift the ice they twist the dock until it looks like a jump-ramp or a roller-coaster track.

CHIMNEY

In the 1800s, there were factories on the north shore of the Island where bricks were made from local clay deposits. By the time the Marine Hospital was built, the brickyards had shut down because they ran out of trees to burn for fuel, so the Marine Hospital chimneys were made from mainland bricks.

FISHING BOAT

Today, fishing boats use gasoline or diesel engines, but in the 1800s and early 1900s they used sails instead. Catboats, like *Vanity*, had big sails to give them power to pull nets and scallop dredges.